

Large Projects + Professional Skills Outline
Technical_Management_Parametric_End to End
Architecture, Engineering, Urban Design

I UNDERGRADUATE TRAINING_PRINCETON

- ARCHITECTURE MAJOR, MATHEMATICS MINOR
- URBAN DESIGN, COMMUNITY PLANNING
- STRUCTURAL DESIGN, STEEL AND CONCRETE
- CIVIL ENGINEERING, LAND MANAGEMENT, RESOURCES

WITH HARRISON FRAKER FAIA (later as DEAN BERKELEY), DOUG KELBAUGH FAIA (later as DEAN MICHIGAN), BOB GEDDES FAIA (DEAN PRINCETON), PETER WALDMAN FAIA (later EMERTIUS UVA), NORMAN SOLLENBERGER ACI, ROBERT MARK AISC, STRUCTURAL

BACHELOR OF ARTS IN ARCHITECTURE 1975. HIGHEST HONORS, THESIS PRIZE AARDED FOR OVERSEAS RESEARCH AND STUDY

*DESIGN THESIS: MODERN MUSEUM, UTICA NY, EDIT OF MUNSON WILLIAMS PROCTOR INSTITUTE BY PHILIP JOHNSON FAIA
1971-1975*

CORPORATE EMPLOYMENT_ENGINEERING_STETSON PARTNERSHIP, UTICA NY

- LAND SURVEYING, CIVIL ENGINEERING. 1200 KV POWER EASEMENTS COMPUTERS, HIGHWAY DESIGN, CUT,/FILL, BRIDGES, ROADS, CAPITAL IMPROVEMENTS 1973, 1974

II OVERSEAS TRAVEL + RESEARCH _ GAP YEAR

- MODERNISM IN EUROPEAN CITIES. STUDY TOUR. 15 COUNTRIES. FINLAND TO GREECE. AALTO + CORBUSIER. FOCUS ON CONNECTION OF WESTERN EUROPEAN MODERNISM TO BUILT FORM IN CITIES + URBAN LIVING.
- ITERNARY . MAJORITY OF AALTO AND MANY CORBUSIER BUILDINGS, KEY CLIENTS, CRITICS
- EXTENSIVE TRAVEL THROUGHOUT SCANDINAVIA. PHOTOGRAPHY, WRITING
- MET AALTO ARCHITECTURAL OFFICE STAFF, MUNKENIEMI NEAR HELSINKI GOREN SCHILDT, INTERNATIONAL AALTO ART CRITIC, TAMISAARI FINLAND GRAHAM SHANLEY, AMBASSADOR US TO SWITZERLAN, GENEVA AMERICAN ACADEMY IN ROME, JOHN JOHANSEN, ROME ITALY 1975

CORPORATE EMPLOYMENT _ARCHITECTURE_STETSON PARTNERSHIP

- ARCHITECTURAL DESIGN + DOCUMENTATION. LITTLE FALLS HIGH SCHOOL, LITTLE FALLS NY 1976

III GRADUATE PROFESSIONAL TRAINING_PRINCETON SCHOOL OF ARCHITECTURE AND URBAN PLANNING_SAUP

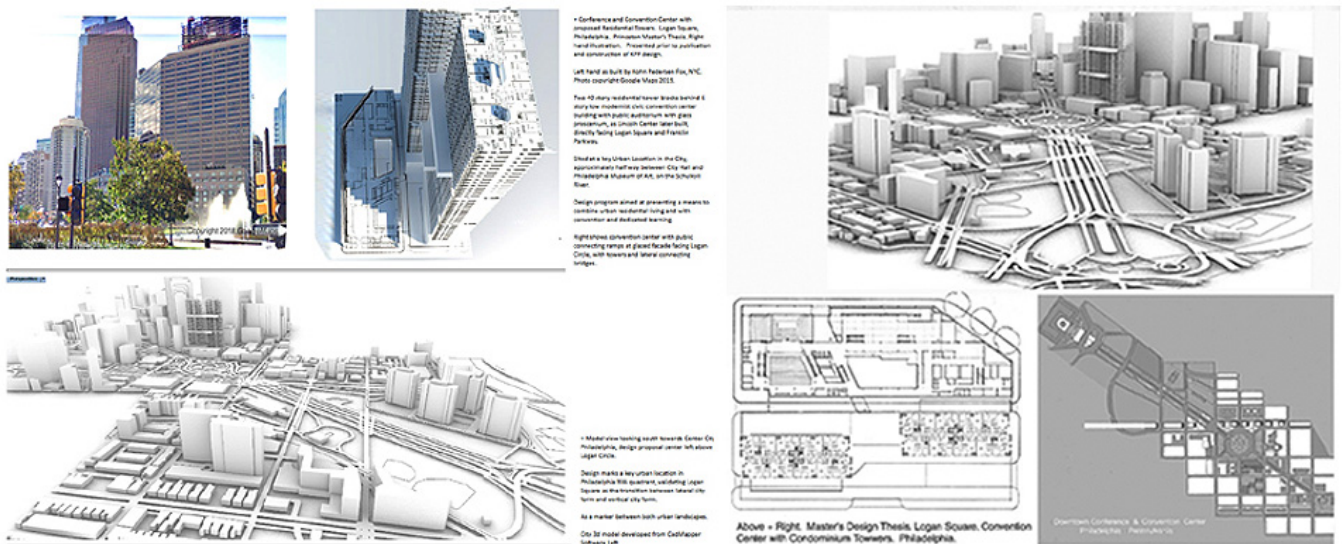
- PUBLIC + PRIVATE BUILDINGS OF VARIOUS SCALE AND VARIOUS DESIGN PROGRAMS INCL. NYC ATHLETIC CLUB REPURPOSE (ALAN CHIMACOFF), PHILDELPHIA MIDRISE RACE STREET HOUSING, PHILADELPHIA CONFERENCE AND CONVENTION CENTER AT LOGAN CIRCLE (CARLES VALHONNRRAT) MASTERS THESIS. DESIGN ANTICIPATED BUILT PROJECT BY KOHN PEDERSEN FOX NYC

WITH MICHAEL GRAVES FAIA, PETER EISENMAN FAIA, ROBERT STERN FAIA, TONY VIDLER RIBA (CAMBRIDGE), ALAN COLQHOUN RIBA, JOSEPH RYKWERT RIBA (AA ARCHITECTURAL LONDON), ALAN CHIMACOFF FAIA

MASTER OF ARCHITECTURE 1978

AWARDED TWO FULL GRADUATE ANNUAL FELLOWSHIP STIPENDS FOR RULL RESIDENCE + STUDIES

MASTERS THESIS: CONFERENCE AND CONVENTION CENTER FOR PHILADELPHIA AT LOGAN CIRCLE. 1976-78



Above - Proposed Corporate and Convention Center for Philadelphia. Photo top left copyright Kohn Pederson Fox / Architectural Record as built by KPF.

CORPORATE EMPLOYMENT_ARCHITECTURE
OFFICE OF JOHN CARL WARNECKE FAIA ARCHITECT, WASHINGTON DC

- *DESIGN AND DOCUMENTATION GEORGETOWN UNIVERSITY STUDENT HOUSING VILLAGE, HART SENATE OFFICE BUILDING CAPITOL HILL, TED KENNEDY RESIDENCE RENOVATIONS, SILVER SPRING MD, BRONZE CEMETERY GRAVE FURNITURE, ARLINGTON NATIONAL CEMETERY FOR JFK + RFK GRAVES (BUILT IN 1978)
1977*
-

IV CORPORATE EMPLOYMENT, ARCHITECT IN TRAINING, WASHINGTON DC
PERKINS + WILL, 1828 L STREET, DC OFFICE

- *COMMERCIAL HIGHRISES, DESIGN + DOCUMENTATION, RIYADH, SAUDI, DOCUMENTATION, LOMBARDI CANCER RESEARCH LABORATORIES GEORGETOWN, PLANNING NATIONAL INSTITUTES OF HEALTH, BETHESDA, GOVERNMENT SERVICES GSA ADMIN PARAMETRIC MODEL FOR DESIGN ADJACENCIES FOR 3MM GSF ALLOCATION OF 28 US FEDERAL DEPARTMENTS.*

WITH TOM CANFIELD FAIA, TOM FROMM, AIA

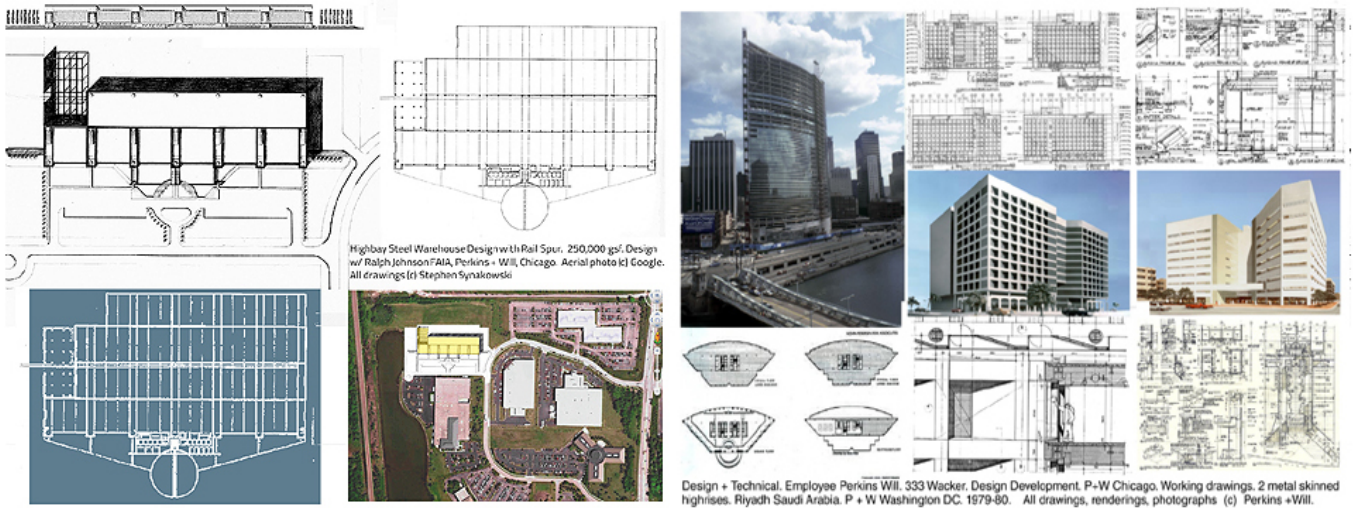
- *COLLEGIATE TEACHING. OFFERED AND DECLINED FOR ASSISTANT TENURE TRACK TEACHING POSTS AT WASHINGTON UNIVERITY, ST. LOUIS, AND CARNEGIE MELLON, PITTSURGH, 1978*

ARCHITECT IN TRAINING, 1978-1980

CORPORATE EMPLOYMENT, ARCHITECT IN TRAINING, CHICAGO, IL
PERKINS + WILL, 2 NORTH LA SALLE ST, CHICAGO

- *CORPORATE + FEDERAL COMMISSIONS. US + INTERNATIONAL INCL. EGYPT, THAILAND, IRAQ, SAUDI ARABIA. SCHOOLS + COLLEGIATE, CAMPUSES, COMMERCIAL HIGHRISES, INDUSTRIAL, HEALTHCARE INCL. HOSPITALS, LABS, CLINICS. EL TARIR HIGHRISE CAIRO, UNIVERSITY OF TECHNOLOGY, BAGHDAD, IRAQ, BUILDINGS + PLANNING, SCRIPPS INSTITUTE LA JOLLA, CHILDRENS MEMORIAL HOSPITAL CHICAGO, ST ANNES HOSPITAL CHICAGO, ST JOHNS HOSPITAL, ANDERSON INDIANA, EASTLAKE HOSPITAL CHICAGO, BROOKVILLE HOSPITAL, BOOKVILLE PA, INDUSTRIAL STAGING WAREHOUSE, WAUKEGAN, IL, STREETScape DESIGNS, HARVEY, IL;*

WITH RALPH JOHNSON, FAIA, PERKINS+WILL CORPORATE DESIGN LEAD
1980-1982

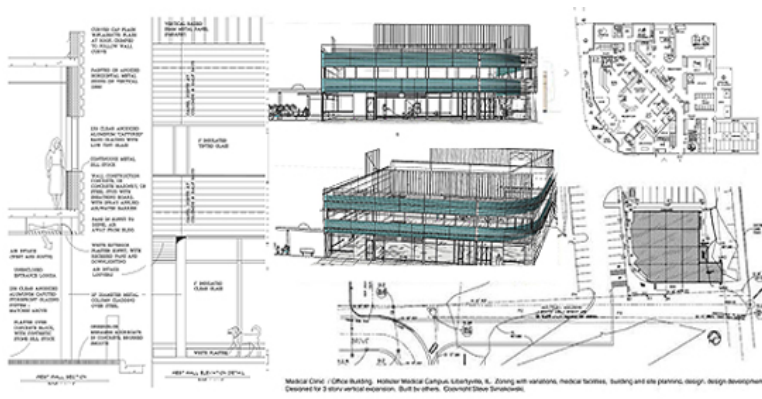


Above -
 With Perkins +Will Chicago and Washington. Left. Industrial Facility, Waukegan, IL, with Ralph Johnson FAIA, Left. Drawings copyright Steve Synakowski. Right, commercial towers incl. 333 Wacker, Chicago, Commercial Towers, Riyadh, Saudi Arabia.

- **LICENSED ARCHITECT ILLINOIS**
 1981

V PRIVATE ARCHITECTURAL PRACTICE
CHICAGO, IL; LAKE FOREST IL

- *REGIONAL ARCHITECTURAL PRACTICE. DESIGN BID BUILD DELIVERY MODEL. INSTITUTIONAL. COMMERCIAL AND PRIVATE RESIDENTIAL CLIENTS. JOINT VENTURES. REGIONAL ENGINEERS AND ARCHITECTS.*
- **MIDRISE** MIXED USE TOWER, WITH PHILIP COHEN AIA, GREEKTOWN, NEAR WEST SIDE CHICAGO,
- **COMMERCIAL** REGIONAL SHOPPING CENTER FOR BROWNFIELD SITE, CHICAGO NORTH SIDE , CARPETLAND COMMERCIAL FRANCHISES CENTRAL US W/ PHILIP COHEN AIA ARCHITECT, GOLZ MOTORS EXPANSION, DEERFIELD, IL



Above -
 Left, Medical Clinic, Offices. Libertyville, IL 2006. Right, ONEAC Manufacturing, Lake Forest, IL 1984, with Harry Rosengren AIA. Photo copyright 2007 Lake County Mapping

- **MANUFACTURING** *ONEAC MANUFACTURING FACILITY, LAKE FOREST, W/ HARRY ROSENGREN AIA*
- **MULTIFAMILY** *CONDOMINIUM LOFTS, SOUTH SIDE CHICAGO W/ PHILIP COHEN AIA ARCHITECT, CONDOMINIUM HIGHRISE CHICAGO NORTH SIDE, W/ JAMES FOLENSBEE AIA, CONOMINIUMS AT TABOR HALL AT BARAT COLLEGE, LAKE FOREST, W/ ILLINOIS LANDMARKS PRESERVATION COMMISSION, DAVID BAHLMAN PRESIDENT*



Above -
 Archer Canal Condominiums, Chicago, South Side. 100 DU, parking, commercial. Left, main entry looking north to Sears Tower. Right, Parking Garage. Photographs copyright 2022 VHT.

- **EDUCATIONAL** *CAMPUS ARCHITECT, LAKE FOREST COLLEGE, DORMITORIES AND DORMITORY EXPANSIONS, CAMPUS PLANNING (PUBLISHED), STUDENT ASSEMBLY DESIGN, TECHNICAL REUSE PROPOSALS FOR HISTORIC INSTITUTIONAL INCL. CAVALRY HALL, HOLABIRD + ROCHE, FORT SHERIDAN, IL. ELEMENTARY SCHOOL ADDITIONS, BANNOCKBURN, IL.. HIGH SCHOOL FOR THE FINE ARTS, BIRMINGHAM, AL, DORMITORIES PROPOSAL, DRURY COLLEGE,*

SPRINGFIELD, MISSOURI, W/ JOHN HEJDUK DESIGN CRIT, ESTONIA HIGH SCHOOL FOR THE FINE ARTS, DESIGN PROPOSAL, 110,000 GSF NEW CONSTRUCTION, LONG SPAN CONCRETE, 12 STORY. PREMIATED TO FINAL ROUND

- **MEDICAL** OUTPATIENT VET CLINIC LIBERTYVILLE, IL, VARIOUS MEDICAL INTERIOR BUILDOUTS CHICAGO, VETERINARY CAMPUS INCL BUILDINGS AND LANDPLAN, RIVERWOODS IL
- **PLANNING** URBAN COMMUNITY DEVELOPMENT BLOCK GRANTS, EVANSTON, IL 600 ACRE LANDPLAN, WILLIAMSBURG, VA, LANDPLAN REUSE PROPOSAL FOR URBAN LOWRISE SUBURBAN RESIDENTIAL FOR A 28 ACRE FORMER COLLEGIATE CAMPUS, LAKE FOREST, IL. TRADITIONAL BRIDGE REDESIGNS, KANSAS CITY, MO. W/ BENISCH ENGG, CHICAGO, 1200KV TOWER DESIGN SYSTEM PROPOSAL FOR LANDSNET POWER COMPANY

WORK IN PRIVATE PRACTICE MIDWEST, EAST COAST, FAR WEST, PROPOSALS AND COMPETITIONS INCL JOINT VENTURES WITH REGIONAL CHICAGO ARCHITECTS AND ENGINEERS

1982-2012

- **LICENSED ARCHITECT CONNECTICUT 1986**
- **NATIONAL COUNCIL ARCHITECTURAL REGISTRATION BOARDS 1986**
- **LICENSED ARCHITECT MASSACHSETTS 1996**
- **LICENSED ARCHITECT NEW JERSEY 2006**



• **Traditional Highrise Flat Plate**

• Chicago Mixed Use 30 Story Traditional Highrise. 500,000 gsf residential plus supporting commercial at grade with enclosed multilevel parking.

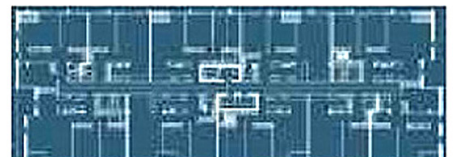
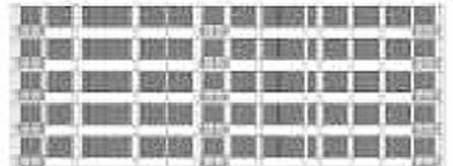
Multifamily 300 du Condominium Mixed Use Residential Commercial Highrise Proposal with commercial and parking. West Loop, Greektown on the Edens Expressway, Chicago, IL.

• Floor plan shows proposed standard 20,000 gsf floor plan layout with 4 two br and 2 one br units. All larger units have exterior terraces.

10 du per floor, shown is mix of 8 two bedrooms and 2 one bedroom units conventional Chicago modern apartment units Conventional flat slab construction.

Photo as designed and built by others. Copyright Google Maps.

For Kaz Inc. Developers, Chicago, IL. With Philip R. Cohen, Architects, Chicago, Illinois



Above -

500,000 gsf conventional mixed use flat plate tower. For Kaz Development, Chicago, 1997. Design proposal with Philip Cohen AIA Architect. Built by others. Photo copyright Google. Drawings copyright Stephen Synakowski

- *NATIONAL COUNCIL OF ARCHITECTURAL REGISTRATION BOARDS CERTIFIED 1986;*
- *LICENSED ARCHITECT CONNECTICUT 1986*

- *COLLEGIATE TEACHING. ADJUNCT ASSISTANT PROFESSOR UNIVERSITY OF ILLINOIS CHICAGO UIC*

OVERSAW UNDERGRADUATE B ARCH STUDIO. TAUGHT HIGHRISE DESIGN, AUTOCAD, COMPUTERS.

UNDERGRADUATE CURRICULUM PARALLEL TO GRADUATE DESIGN STUDIOS W/ STANLEY TIGERMAN FAIA, DEAN UIC, REM KOOLHAAS, DANNY LIEBSKIND

1992-1994

VI PRIVATE PRACTICE NEW YORK, TECTONX PROGRAM MANAGEMENT EDUCATIONAL, COMMERCIAL, INDUSTRIAL DESIGN

- *EDUCATIONAL REPURPOSE, THE CHILD SCHOOL, ROOSEVELT ISLAND REGIONAL MANAGEMENT CONSULTING AND DESIGN CONSULTING. PROGRAM MANAGEMENT, NYC W/ DARIUS TORABY AIA, COMMERCIAL DESIGN, HIGHRISES, BRYANT PARK, W/ GRAEF ENGINEERING, HIGHLINE STAGGER TRUSS MIXED USE TOWER, W/ THORNTON TOMASETTI CHICAGO, HARLEM RIVER YARDS, SOUTH BRONX, INDUSTRIAL PARK PORTAL BUILDING, FOR FRESH DIRECT, TRUCK PARKING DECKS, WORKFLOW, ANALYSIS AND RECOMMENDATIONS, FOOD PROCESSING ASSEMBLY LINES, DM BUILDING MATERIALS, BROOKLYN, CLADDING, SIGNAGE*
-

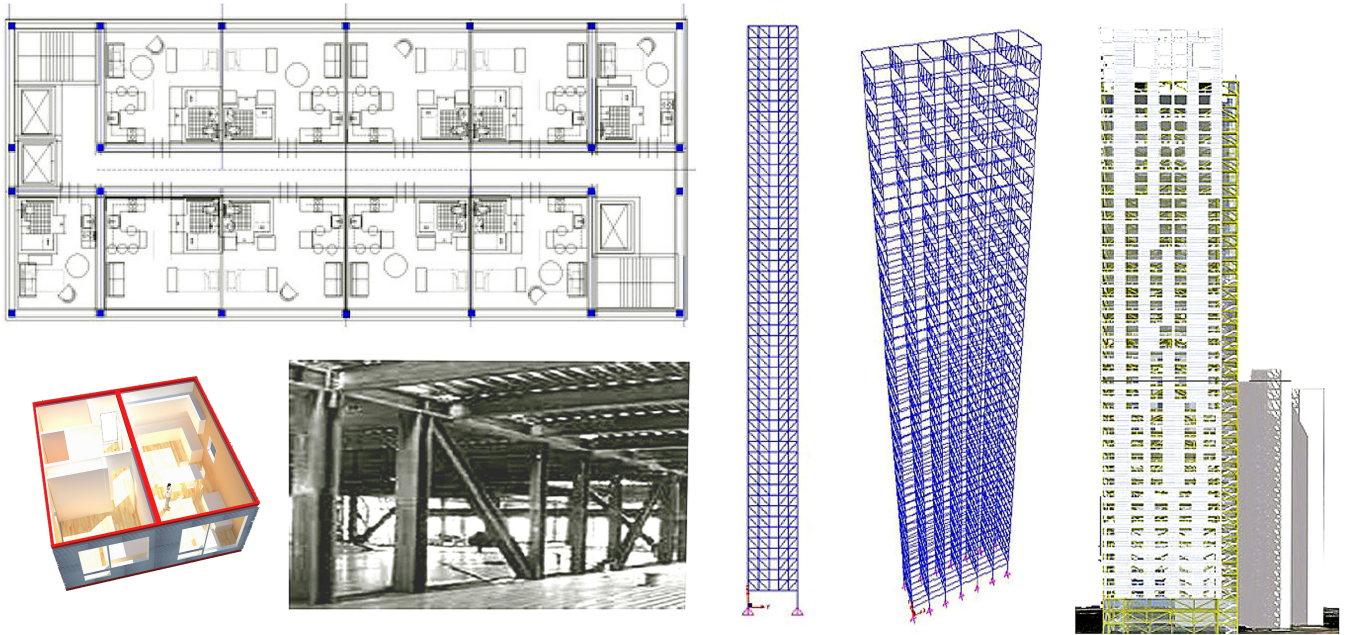


Above -

Various Program Management + Designs, Tectonx. Harlem River Yards Industrial Yard Office Portal Building, Bronx, NY, 2012-2014. All illustrations Copyright 2024 Stephen Synakowski



Above -
 Program Management, Arts Center, Child School, Roosevelt Island, Manhattan, NY. Darius Toraby Architect of Record. 2012-2014.



Prefab highrise residential. Stagger truss midrise_highrise high density. Thornton Tomasetti SE, David weihing SE. Steel Messurier retriangulated trussing, 60' width, 120' bay length. Units 25 by 60', inserted directly into slabs in frame. (c) 2012 Steve Synakowski

Above -
 Stagger Truss High Density Tower, in Response to call for Entries, NYCAIA, 2012. All illustrations and designs Copyright 2024 Stephen Synakowski

2012-2014

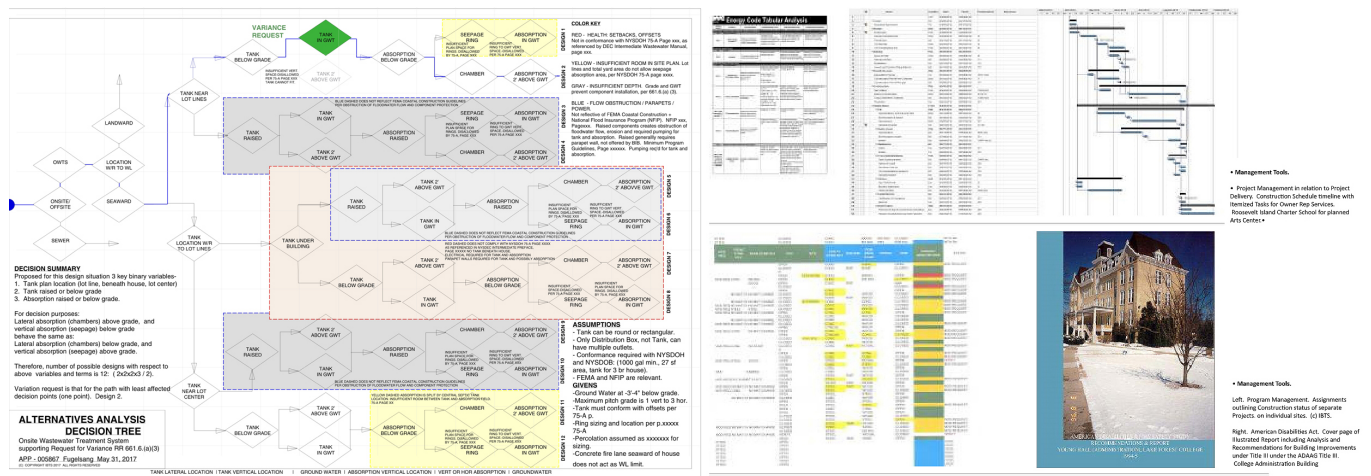
- LICENSED ARCHITECT NEW YORK 2012

VII PROGRAM MANAGEMENT COMMERCIAL, RESIDENTIAL
MANAGING ARCHITECT NYC OFFICE FOR IBTS, BROOKLYN. IBTS HQ STERLING, VA

PROGRAM MANAGEMENT, ENVIRONMENTAL AND BUILDING ENGINEERING. \$75 MM NYC SHORELINE COMMUNITY RECONSTRUCTION, NYC FOR IBTS CONTRACT WITH NYCHRO RE FEMA NYC RESILIENCY \$400 MM TOTAL CONTRACT OF 2 BN FEMA TOTAL GRANT. OVERSEE STAFF AND COMMISSIONED ARCHITECTURE + ENGINEERING FIRMS RE RESIDENTIAL + COMMERCIAL COMMUNITY RECON. STATE AND CITY CODES. WORK W/ NYSDEC, NYCDOB, NYCZBA, NY RISING. MODULAR. STRUCTURAL, GEOTECH, FOUNDATIONS, INSPECTIONS, VARIATIONS, BUDGETS, SCHEDULES, PROCUREMENT, STAFFING.



Left BroadChannel Reconstruction, Copyright NY Rising. Left, top, Copyright NYT, top right, Copyright Kinsinger, lower Stephen Synakowski for IBTS



Above - Various cuts of Community Development Strategies and Management Tools used with IBTS. All engineering and environmental management oversight for 75MM scope.

2014-2019

VIII PROGRAM MANAGEMENT DESIGN ENGINEERING TECTONX, NEW YORK

PREFAB, AUTOMATED, MODULAR PRODUCTION TECHNOLOGIES AT SCALE, AUTOMATED PRODUCTION PREFAB VOLUMETRIC (WOOD, STEEL) COLD ROLLED STEEL, PANELIZED INCL. SIPS

EXPLORATION OF RELEVANT DESIGN DELIVERY TECHNOLOGIES FOR 2024 FF

- VOLUMETRIC,
- PANELIZED,
- COLD STEEL

BUILT UPON TECHNICAL AND DESIGN EXPERIENCE OF VARIOUS BUILDING AND PROGRAM TYPES, AND SUPPORTED BY PROGRAM MANAGEMENT EXPERIENCE FOR COMMUNITY DEVELOPMENT IN/WITH NEW YORK CITY.

FOCUS ON AUTOMATION, DEVELOPMENT AND USE OF PARAMETRICS TO AUTOMATE DESIGN AND PRODUCTION WORKFLOW.



Above, clockwise from top left - Cold Rolled or Volumetric Steel Senior Condominiums, Vernon Hills, IL (site plan copyright Everleigh), Volumetric Steel Condominiums/Commercial CourtYard, Buffalo Grove, IL, Midrise Volumetric Urban Micro Studio Tower, Long Island City, Lowrise Cold Rolled / Volumetric Steel Senior Apartments, 5 to 8 stories, Buffalo Grove, IL. All illustrations and designs Copyright 2024 Stephen Synakowski



Above -

Cold rolled Steel Modular Townhouses 90 unit PUD, Brooklyn, NY 2024. Design Copyright 2024 Stephen Synakowski CRS is the only material allowed in NYC for attached multifamily on account of NYC Life Safety and Fire Code. Units have prefab CRS panelized walls, partitions, sprinklers

VIII END TO END DELIVERY | PARAMETRICS

Professional Career Aim is design delivery of large long term sustainable architecture and engineering projects using End to End strategies in relation to Best Practices in design, technical and project / program management. Seek to optimize Design Delivery as defined by Process.

End to End defines a method of design delivery used for many large projects, notably turnkey. Its core value is as a means to deliver complex projects through coordinated management of project technical parameters.

Such a data driven approach reflects in early career projects as shown in this Outline as competence in technical detailing and construction documentation. In later career projects it reflects in the deployment of quantitative tools for project and program management at scale.

DESIGN DELIVERY

Design delivery involves project engineering managed in terms of construction method insofar as linking design, documentation to delivery management.

This Chronology reflects a deliberate long term focus on delivery process over design.

Career wide professional roles were chosen to expand understandings of aspects of construction content, including design program types, scales, scopes, client types, contracts, etc.

These aspects were then explored through construction method including CAD / BIM, and program management parametric softwares.

Content and construction related method strongly support QAQC, SME and Value Add as offered skillsets.

Value add ranges from environmental engineering to administrative interpretation skills of Codes and Regulations

ENGINEERING PROCUREMENT CONSTRUCTION MANAGEMENT (EPCM)

This Chronology Outline reflects diverse professional involvements, from design, to production and project program management.

The Chronology Outline reflects intentionall diverse assignments in devrse setting, including design, technical programming, scope, client type, contract type, etc. This management linked model reflects a generalist perspective where specialist competence is a function of function of manageing procurement and hiring.

The linked web material illustrates End to End management in relation to Prefab Modular, including Volumetric.

Projects shown at the link include new design program types reflecting processes involving engineering, architecture and offsite manufacturing as an automated process. Biggest near term hurdle is CAD CAM and consistency of dimensional tolerances in structural framing. This immediately relates to considerqtion of process and delivery of FFE, fixtures, furnishings, equipment, and considerations of scale in relation to manufacturing.

[link: www .tectonx.net](http://www.tectonx.net)

SS

Brooklyn 2024

~

Stephen Synakowski RA, NCARB, AISC _ Design Engineering

609. 213. 4733 www.stephensynakowskiarchitect.com stevesynakowski@hotmail.com

Registered Architect NY, NJ, CT, MA, IL. National Board. Prefab Steel Structures, Volumetric, Panelized. Automation. Design Engineering. Component Fabrication. Intelligent Design. Construction at Scale. Parametrics_BIM. Value Adds: Delivery of Architectural Form via Mathematics, viz. Structural Engg, Program Management, etc..

1/ Architectural Engineering at Component Level; 2/ Program Management at Delivery Level. Budgeting, Phasing, Schedule, On-time Delivery. BPN, N8N. New Prefab and Repurposing. Factories. SME Modular. QAQC Onsite. Seek Commissioning / Employment w/ Large Corporate EA, AE, AEC, Prefab Mfr, Developer, Owner Rep.;

Design Programs: Multifamily Residential, Educational, Mixed Use Commercial, industrial, Capital Improvements;

Collaborates with NYC and NYS agencies for NYCDOB City Building Permits + NYSDEC State Environmental Permits. NYCDOB + NYSDEC filing agent. NYCDOB Progress and Special Inspections. FEMA compliance w/r to Community Reconstruction. Large Scale CDBG_DR Block Grant oversight, building products + overall delivery;

- MultiFamily Volumetric. Braced core Low-rise and Mid-rise, incl. Cold Rolled Steel (CRS). Lowrise SIPs Panelized MultiFamily. Modular SME;
- Building Repurposing Large Scale. Program Insertions into Existing Historic Envelopes. Industrial to MultiFamily; Institutional + Commercial Insertions;
- Program Management. Design, Engineering + Environmental. QAQC. Packaging Plant Peer reviews, Distribution Centers, Design of High bay Factories ;

Workflow Competencies

- **Process Modelling**_BPN, N8N
- **Detailing**_Design Engineering
- **Scope**_Design Alternatives, BIM
- **SME**_Prefab Steel + Modular Delivery
- **Engineering**_ Structural, MEP, Etabs
- **Life Cycle Cost**_4D, 5D, Add + Deduct Alts
- **Project Planning**_ GANT charts, Crit Paths
- **Parametrics**_AI, Alternatives Analyses
- **Environmental**_Sustainability, Resilience

Managing Principal | Stephen Synakowski Architects PLLC dba TectonX. New York

Design + Program Manager: Panelized Multifamily; Lowrise + Midrise. CRS Chicago, 10MM 2022 - : Educational Repurpose; Arts Center, Child School, Roosevelt Island, NYC. 3 MM. 2014. Conventional Midrise; MultiFamily. Hotel_Condominiums, Bryant Park w/ Graeff Engg, Chicago, 2014; Stagger Truss Midrise; Mixed Use Tower, Highline, w/ Thornton Tomasetti, 2014; Industrial Office Building; Harlem River Yards Ventures, Industrial Distribution Center Design Peer Reviews, South Bronx, 2012-3;

Managing Architect NYC Office | with IBTS as Owner's Representative to NYC Office of Housing Recovery, CDBG_DR. New York

Program Manager Engineering + Environmental: Management + technical oversight for \$75 MM of design delivery for NYC shoreline community reconstruction. IBTS contract with NYCHRO re FEMA NYC resiliency program. \$400 MM total Contract. Administrative management of Architecture + Engineering firms re NYC Program + Code Compliance, Engineering, State Health + Environment Codes. Work directly w/ NYSDEC, NYCDOB, NYCZBA re State/City regulations/approvals/permits.. New construction, reconstruction, modular. Structural, foundations, geotech, life safety. Progress + Special Inspections, variations, budgets, schedules, procurement, staffing.

Principal | Stephen Synakowski Architects + Planners. Chicago

Regional Architectural Practice, Educational, Commercial, Residential. + Adjunct Professor, University of Illinois Chicago: Educational. Adaptive Reuse, Lake Forest College Dormitories; Historic Gym Fort Sheridan; Student Assembly Hall; Birmingham AL Arts High School, Bannockburn IL Additions, Primary School; Commercial. Residential Highrise, Urban/Suburban Shopping Centers, incl. brownfield; Midwest CarpetLand commercial franchises, component steel (w/ Philip Cohen Arch). Medical Clinic office bldg, medical retrofits; Residential, Multifamily Adaptive Reuse. Urban condominium lofts. Various single family custom + renovations, Chicago, East Coast;

Digital | Technical | SME

- Steel, concrete, wood design engineering;
- Local Law 11, masonry;
- Prefab Steel. CRS, High bay, Truss Design;
- Elevations. FEMA. Geotech. Micro piles; NYSDEC, FEMA;
- Project Management: Quickbase, SharePoint;
- TestFit, Site Design, Site Parametrics;
- Visualization: Sketchup, Vray, Maya;
- Drafting: AutoCad, Vectorworks;
- RFI, PAA, PWs, TRs, Closeouts. RFA. NYCDOB Permits, Code Amendments, Zoning Variations, Zoning Amendments;
- Inspections. Progress + Special, ADA, NYC Administrative Code, Sprinkler Design;

Corporate | Teaching | Training

- Asst. Professor of Architecture_Adj.
- Corporate, Institutional. Large Scale
- Master of Architecture, MARCH
- Overseas Travel Study_Design Research
- Bachelor of Arts, BA
- University of Illinois Chicago. Undergraduate BArch Program. Computers, Highrise Design;
- Perkins + Will, JC Warnecke. DC + Chicago. Highrise,s, Medical, Industrial, Educational. US + Overseas;
- Princeton University. School of Architecture + Urban Planning, McCormick Graduate Prize Fellowships ;
- Sustainable Architecture Alvar Aalto. Buildings across Europe. Design staff, clients, critics, academics;
- Princeton University. Top Departmental Honors. BA summa cum laude. Shanley Travelling Prize;